



AANN Report for the 19th Annual Stroke Consortium Meeting Pat Lane RN – AANN BOD



AANN's Work To Advance Stroke Care

- Strategic Planning
- Embracing the Future of Nursing
- Collaborative Approach
- Certification
- Special Focus Group
- Seeking Opportunities
- Continuous Performance Improvement
- Recognizing Strength in Numbers





Key Message #1:

Nurses Should Practice to the Full
Extent of Their Education and Training



Key Message #1: Nurses Should Practice to the Full Extent of their Education and Training

Subcategory 1:

Scope of Practice

1. Revision of the American Association of Neuroscience Nurses (AANN) Scope and Standards of Practice for Registered Nurses and advanced practice registered nurses (APRNs)

Subcategory 2:

Transition to Practice (Nurse Residency) programs

1. Implement multilevel residency programs to manage entrance into neuroscience nursing (e.g., student to practitioner).
2. Programs to manage positions of greater oversight (e.g., practitioner to coordinator, coordinator to director).



Key Message # 2

Nurses should achieve higher levels of education and training through an improved education process that promotes seamless academic transition.



Spreading the Education

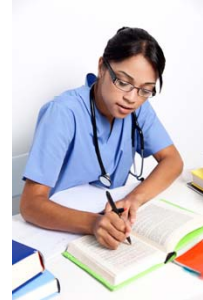
- Stroke Special Focus Group
- WEBINARS
- Stroke Certification
- Presenting at ISC
- Collaborative Partnerships





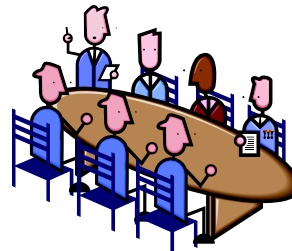
STROKE EDUCATION EXAMPLES

- Stroke Certification
- Core Curriculum
- ISC Conference
- AANN Annual Conference
- Stroke Nurse Education Modules
- Hemispheres® Stroke Competency Series!
- Guide to the Care of Stroke Patients – Clinical Practice Guidelines



Key Message #3



Nurses should be full partners, with physicians and other healthcare professionals, in redesigning U.S. healthcare






Key Message #4

Effective workforce planning and policy making require better data collection and an improved information infrastructure



Key Message #4 Subcategories

Effective Planning	Policy Making
<ul style="list-style-type: none"> Data regarding the healthcare workforce must be accurately collected and analyzed Workforce data is key for development of projection models regarding the workforce needs that will be instrumental to the transformation of nursing practice and education 	<ul style="list-style-type: none"> The AANN strategic plan has identified the goal to “influence the advancement of the field of neurosciences” The AANN Board of Directors recognizes the need to engage in discussions with multiple stakeholders to monitor health policy issues and align with other organizations to obtain the necessary data



Key Message #4 Policy Making How can AANN accomplish this?

- Establish relationships with mission similar organizations and identify the primary purpose of these relationships
- Establish the organizational role in advocacy.
- Recognize and prioritize needs and engage in select political actions
- Understand and disseminate how health policy and related changes affect the organization (governances and membership).



Thinking Outside Our Box

- Neuroscience Nursing Foundation Announces \$8,600 Research Grant for AANN members





Questions

