



NQF Measure Endorsement Process

M.J. Hampel
October 27, 2012




© Copyright, The Joint Commission



National Quality Forum

- ▀ A nonprofit organization comprised of a wide range of healthcare stakeholders including consumer groups, public and private purchasers, hospitals, direct caregivers, and researchers.
- ▀ Purpose:
 - Build consensus on national healthcare priorities
 - Endorse standards for measuring and publicly reporting performance
 - Promote the attainment of national goals thru education



2 © Copyright, The Joint Commission



Endorsement Process

1. Call for Nominations
2. Call for Standards/Measures
3. Steering Committee Review – Recommendations and Draft Report
4. Public and Member Comment
5. Member Vote
6. Consensus Standards Approval Committee Review and Decision
7. Board Ratification
8. Appeal



3 © Copyright, The Joint Commission

Criteria Used to Assess Measures for NQF Endorsement

- ▶ Important to measure
- ▶ Scientifically Acceptable
- ▶ Useable and relevant
- ▶ Feasible to collect

The Joint Commission Certification Disease-Specific Care

4 © Copyright: The Joint Commission

History of Stroke-Specific Data Collection Efforts & Performance Measurement

The timeline shows key events in stroke care and measurement:

- 1998:** Stroke Practice Improvement Network (SPIN)
- 1999:** BAC Recommendations for PSCs
- 2000:** 2000 Brain Attack Coalition (BAC) published the first-ever Recommendations for the establishment of Primary Stroke Centers (PSCs)
- 2001:** The American Heart Association's (AHA) multidisciplinary panel recommended consideration of warfarin in atrial fibrillation, antithrombotic therapy on discharge, carotid imaging, use of stroke units and dedicated protocols, and heparin for prophylaxis of deep-vein thromboses. AHA/ASA launched Get With The Guidelines™ - Stroke (GWTG-Stroke)
- 2002:** The Joint Commission launched its Disease-Specific Care (DSC) Certification Program and began development of an advanced program for Primary Stroke Centers in collaboration with AHA/ASA/BAC
- 2003:** AHA launched GWTG-Stroke/PCNASR created
- 2004:** Standardized Stroke Measures under development
- 2004-05:** 10 stroke measures tested at 50 pilot sites. Data collected for 4 priority measures at all certified PSCs
- 2005:** TJC launched DSC Certification Program
- 2006:** Stroke PM Consensus Panel AHA/ASA/CDC/TJC
- 2006:** Measure harmonization
- 2007:** 12-month Pilot Test
- 2007:** Set of 10 Stroke Consensus Measures implemented
- 2008:** July 2008, National Quality Forum (NQF) endorsed eight of the ten stroke measures
- 2008:** December 2008, Hospital Quality Alliance (HQA) adopted NQF-endorsed™ stroke measures
- 2009:** April 2009, Stroke included in national specification manual with other core measure sets
- 2009:** Stroke (STK) added as a core measure set

The Joint Commission Certification Disease-Specific Care

5 © Copyright: The Joint Commission

Stroke National Hospital Inpatient Quality Measures (Core Measures)

- ▶ **STK-1:** Venous Thromboembolism (VTE) Prophylaxis
- ▶ **STK-2:** Discharged on Antithrombotic Therapy
- ▶ **STK-3:** Anticoagulation Therapy for Atrial Fibrillation/Flutter
- ▶ **STK-4:** Thrombolytic Therapy
- ▶ **STK-5:** Antithrombotic Therapy By End of Hospital Day 2
- ▶ **STK-6:** Discharged on Statin Medication
- ▶ **STK-8:** Stroke Education
- ▶ **STK-10:** Assessed for Rehabilitation

The Joint Commission Certification Disease-Specific Care

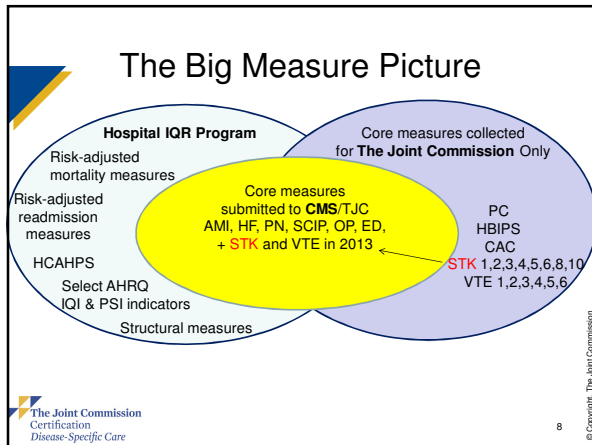
6 © Copyright: The Joint Commission

Hospital Inpatient Quality Reporting begins 1-1-13

- STK core measures will be collected for FY 2015 CMS' s Hospital Inpatient Quality Reporting (HIQR) Program
 - Data collection beginning January 2013
 - First data submission for Q1 data is 8-15-13
- CMS requires one year of data collection and public reporting of it before determining participation in Value Based Purchasing program

The Joint Commission Certification Disease-Specific Care

7



Questions?

M.J. Hampel, MPH, MBA
Senior Associate Director
The Joint Commission
630-792-5720
mhampel@jointcommission.org

The Joint Commission Certification Disease-Specific Care

9
